

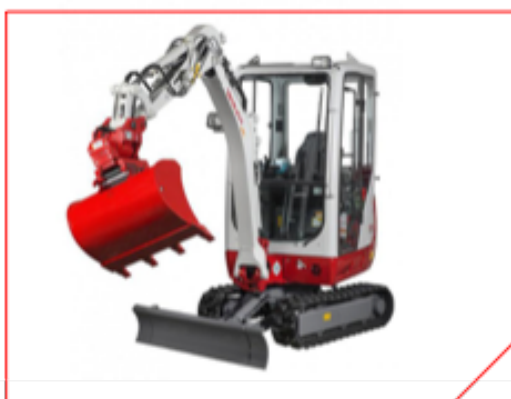
	Health, Safety, Quality and Environmental Alert	Alert number: 18-18	Document Reference: AMG/F/HSQE/001
	Using Mini-Diggers	Issue Date: 25/05/18	Author: Steve Milroy

(To be posted on HSQE Notice Boards for a Period of 1 MONTH from date of issue)

Overview

On the morning of the 08 April 2018 at approximately 0120hrs a Takeuchi TB216 mini digger tipped on its side while working at Camden Carriage sidings. The operator apparently attempted to extend the tracks by lifting the machine using its bucket and blade without first assessing the ground conditions.

The manoeuvre, which is necessary to increase the stability of the machine, requires it to be on firm level ground. As the ground conditions were poor and at an incline, the blade sunk into the ground and the machine tipped over.



As the machine was about to overturn, the banksman approached within the exclusion zone to find out what the operator was doing. The agreed method of communication was verbal. The CCTV video of the site shows that the Banksman had to jump out of the way of the overturning machine.

There were no injuries from the incident and only minor damage to the machine.

Actions Required

To reduce the risk of the Banksman being injured by the moving machine, Dect-Com must now be provided and used for all mini-digger operation as is currently required for full sized excavators and similar plant. The Banksman must then confirm with the operator that the machine is stopped before entering into the exclusion zone.

All operations using mini-diggers must be pre-planned to ensure that the ground conditions are suitable for the intended operation. This must include the unloading or delivery point and the full route to the site of work.