



Infrastructure Projects Southern Home Safe

The Southern Region's Weekly Safety Update

13 June 2018

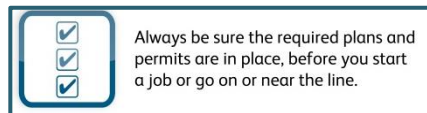
Is your team clear of the line?

A Signaller called the Safe Work Leader (SWL) at Three Bridges to see if it was possible to hand a line block back to allow a train to run through. The SWL agreed and handed the line block back with the team still running cables in the Up Brighton Fast cess.

The SWL shouted to the team to get into a place of safety and the team realised that they did not know where the place of safety was. The SWL had not mentioned it in the briefing and this had not been challenged. The team managed to reach a suitable position of safety one minute before the train passed. The SWL was tested for drugs and alcohol and has been stood down pending an investigation.

Although this incident is currently under investigation, these are the immediate lessons learnt:

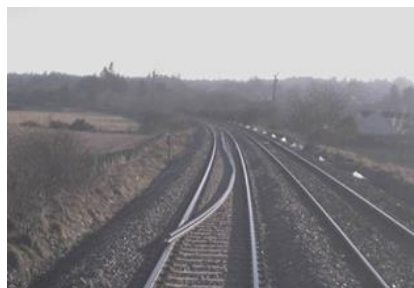
- Always ensure that you have appropriate knowledge of the site, including the place of safety, before works begin.
- The SWL should always make sure that everyone is in a position of safety prior to handing back the line blockage.



Is your equipment clear of the line?

Over the last few years there have been a number of incidents in which railway lines have been returned to service in an unsafe condition following engineering works.

Recent incidents include a train travelling at about 53mph striking the end of a 425ft long piece of rail which had been left on the Up Line south of Inverness.



What you need to do

- On completion of engineering work, a nominated competent authorised person must undertake an inspection of the track to confirm that it is safe for trains at the authorised line speed.
- Implement any additional measures that are required to ensure the safety of the line following engineering works

You can find further information on the [RAIB website](#).

The Sentinel Scheme Rules have been updated

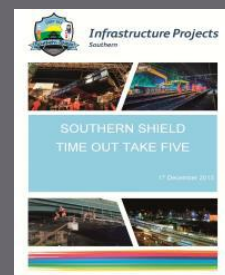


This week, version three of the Sentinel Scheme Rules was published with a compliance date of Monday 9 July 2018.

Changes have been made following on from feedback, Formal Review panels and appeals. The changes were reviewed and amendments recommended by Infrastructure Safety Leadership Group (ISLG), Rail Industry Contractors Association (RICA), Network Rail and Transport for London amongst others.

You can find the details of the changes being made to the Sentinel Scheme Rules [here](#).

Raising your concerns



Do your people know that if they have any concerns about a task or the local environment they can raise a Close Call or a Time Out, Take Five or Feel Safe to Ask? There is material available on the [Southern Shield website](#) that you could use for a briefing before you start work on your site.

Contact us: shield@networkrail.co.uk or go to www.southernshield.co.uk

Overhead line strike fine



A construction site contractor was fined over £500,000 for striking an overhead power line. The driver was emptying a load of soil from the tipper when he drove forward with the bed still raised and touched the 33kV overhead power lines. The tipper truck sustained minor damaged; however, the driver was unhurt.

The HSE said that the company should have carried out a 'more rigorous' risk assessment and that its system of work was inadequate to reduce the risk of tipper trucks striking overhead power lines.

Of course this could never happen on one of our sites...

In 2015, the site team in Basingstoke was placing lighting columns into previously installed sleeves. They proceeded to install the final column of the day with the base of the final eight metre lighting column.

The excavator operator then began to lift the column guided by the foreman/banksman so that the base of the column could be slid into the sleeve. As the column was moved towards the vertical position, it came into contact with SSE 11kV overhead cables located directly above the sleeve. This resulted in the ground worker, who was holding the base of the lighting column, receiving an electric shock and contact/exit burns.



According to the HSE, every year in the UK, two people are killed and many more injured when mechanical plant and machinery comes into contact or close proximity to overhead power lines.

Always consider the following when operating plant and machinery near overhead lines:

- Always identify the risk of potential contact with overhead cables from the outset.
- Ensure that adequate measures are taken to prevent contact.
- If overhead lines cannot be diverted prior to works commencing, goalposts should be erected either side of them to warn all drivers of their presence.

Further information and lessons on this incident can be found in the [Southern Shield Lessons Learnt document](#).

Toolbox Talk – ready to go!



Did you know that a series of safety and environmental toolbox talks are available on the Southern Shield website? These can be downloaded or printed for you to use in team briefs and during stand-downs.

For example it may be a good time to brief your site teams on the dangers of working in the sun or on site security before the school holidays start.

Next stop:

www.southernshield.co.uk

Company fined after employee injured by road roller

A company was fined after an employee was run over by a road roller. An investigation by the Health and Safety Executive (HSE) found that the vehicle in question was operating without a flashing beacon and the reversing alarm was not working.

The HSE said, "This case highlights the importance of proactive maintenance and pre-use inspection of work equipment, including flashing beacons and reversing alarms. In this case, the company failed to effectively maintain their road roller and it could easily have resulted in a fatality."

Did you know... being injured by plant is one of the top causes of fatalities in UK construction?

Don't forget the Safe Use of Plant handbook is available on the [Southern Shield website](#).